

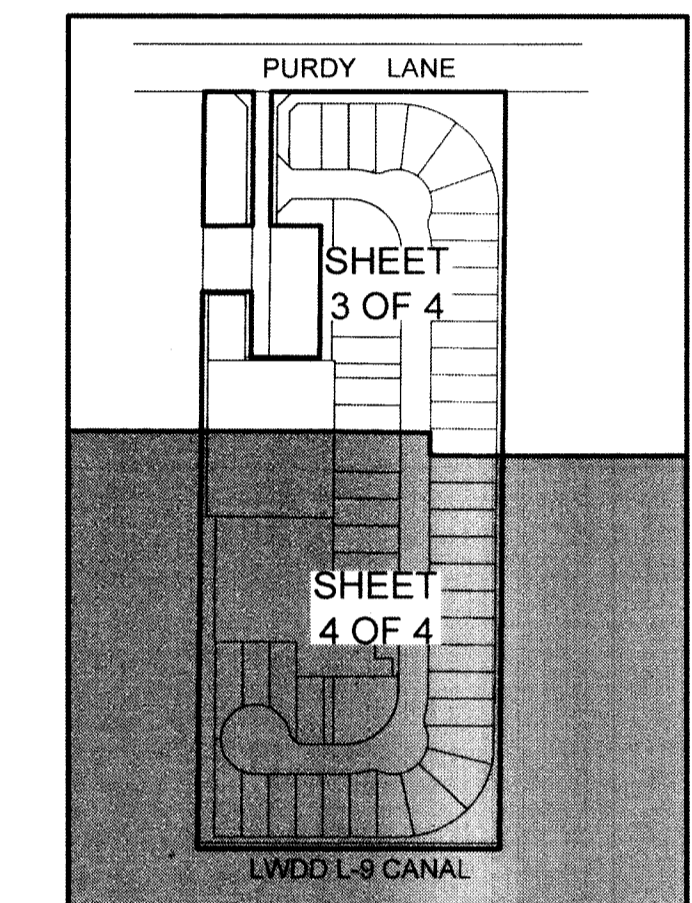
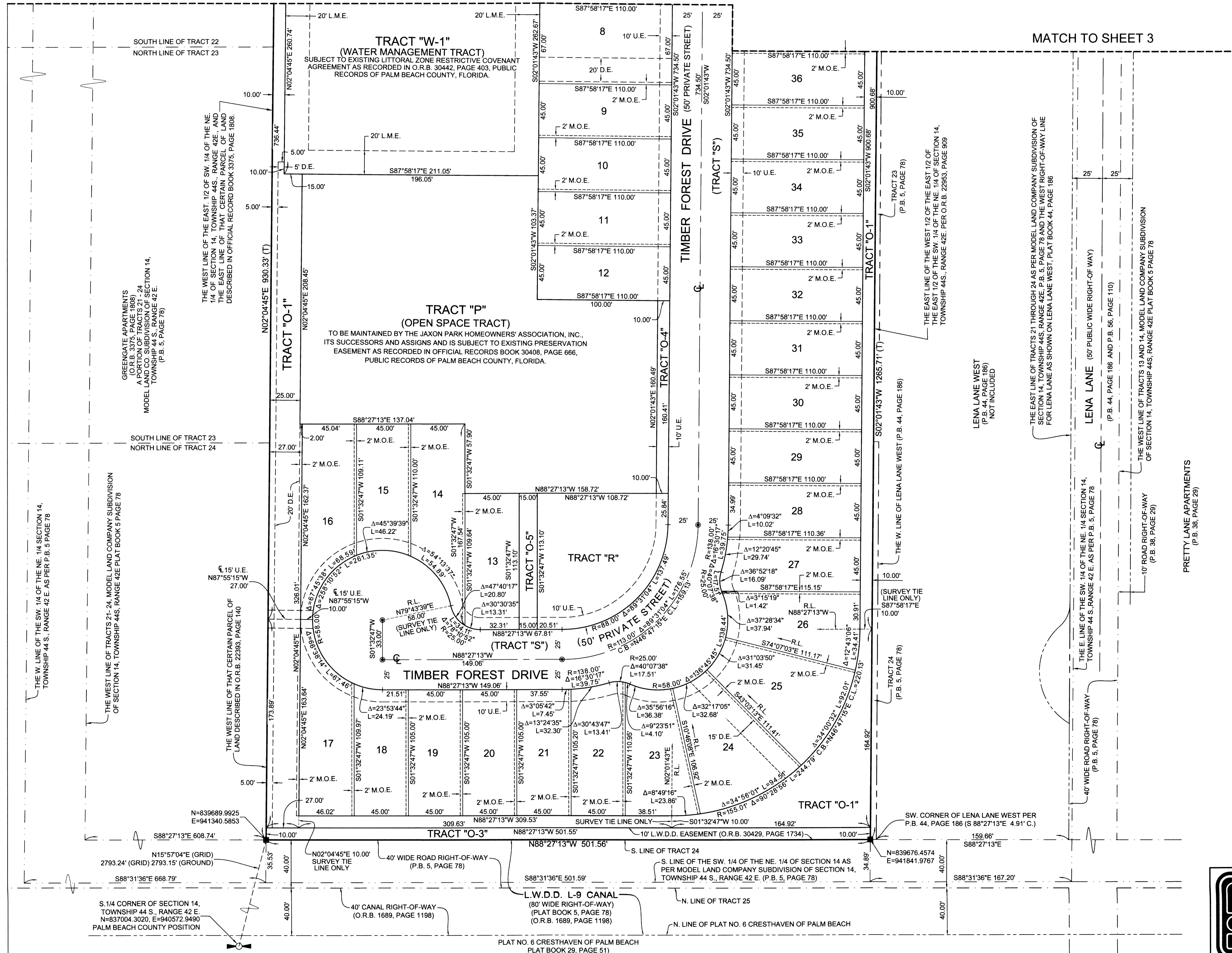
JAXON PARK

LYING IN SECTION 14, TOWNSHIP 44 SOUTH, RANGE 42 EAST, PALM BEACH COUNTY, FLORIDA,
BEING A REPLAT OF A PORTION OF TRACTS 21, 22, 23 AND 24, MODEL LAND CO. SUBDIVISION OF SECTION 14, TOWNSHIP 44
SOUTH, RANGE 42 EAST, AS RECORDED IN PLAT BOOK 5, PAGE 78 OF THE PUBLIC RECORDS OF PALM BEACH COUNTY, FLORIDA.

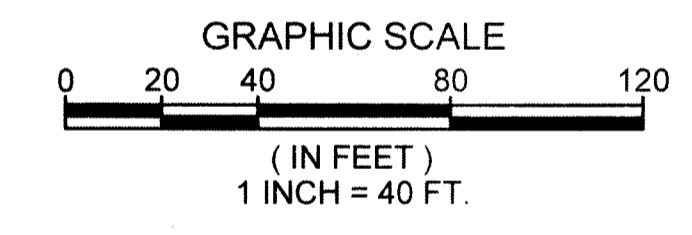
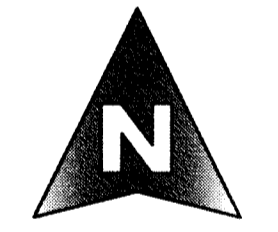
59

MATCH TO SHEET 3

MATCH TO SHEET 3

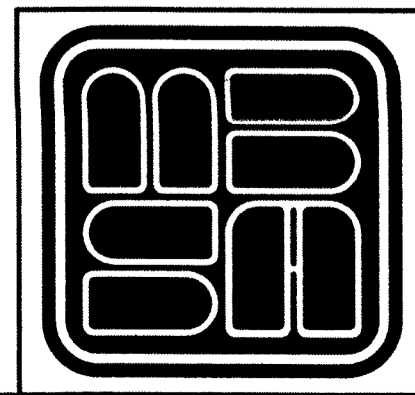


KEY MAP
NOT TO SCALE



COORDINATE NOTE:
STATE PLANE COORDINATES SHOWN ARE GRID DATUM, NAD 83 1990
ADJUSTMENT, FLORIDA EAST ZONE, COORDINATE SYSTEM 1983 STATE
PLANE, TRANSVERSE MERCATOR PROJECTION
LINEAR UNIT = US SURVEY FEET
ALL DISTANCES ARE GROUND
SCALE FACTOR = 1.00003557
GROUND DISTANCE X SCALE FACTOR = GRID DISTANCE

SHEET 4 OF 4



**MICHAEL B. SCHORAH
& ASSOCIATES, INC.**
1850 FOREST HILL BLVD., SUITE 206
WEST PALM BEACH, FLORIDA 33406
EB# 2438 TEL. (561) 968-0080 FAX. (561) 642-9726 LB# 2438

JAXON PARK